



Service Information Letter

SIL Number:	606-00000-003		
To:	Avidyne Dealers		
Subject:	MLB100		
Purpose:	This Service Information Letter (SIL) is intended to provide supplemental information for the Avidyne MLB100		
Revision:	03	Date:	11/03/15

Effectivity:

Description	MLB100
Avidyne Part Number	200-00270-000

Discussion:

The following information is provided to supplement the existing installation data for the Avidyne MLB100 receiver. The installation of the MLB100 should be installed per NavWorks AML STC SA11172SC.

If the subject aircraft is not listed in the STC approved model list (AML) then a field approval based on this STC is required. MLB100 Data including Installation Manuals at the Avidyne Dealer web page at <http://dealers.avidyne.com/downloads/downloads.asp?prod=mlb100>.

NavWorx AML STC and Installation Manual can be accessed via Navworx website at <http://www.navworx.com/ADS600aml.php>.

Supplemental information:

Additional information for the MLB100 receiver is available in the Avidyne MLB100 Installation Manual, Avidyne document 600-00311-000, and Avidyne IFD540/440 GPS/NAV/COM Installation Manual, Avidyne document 600-00299-000.

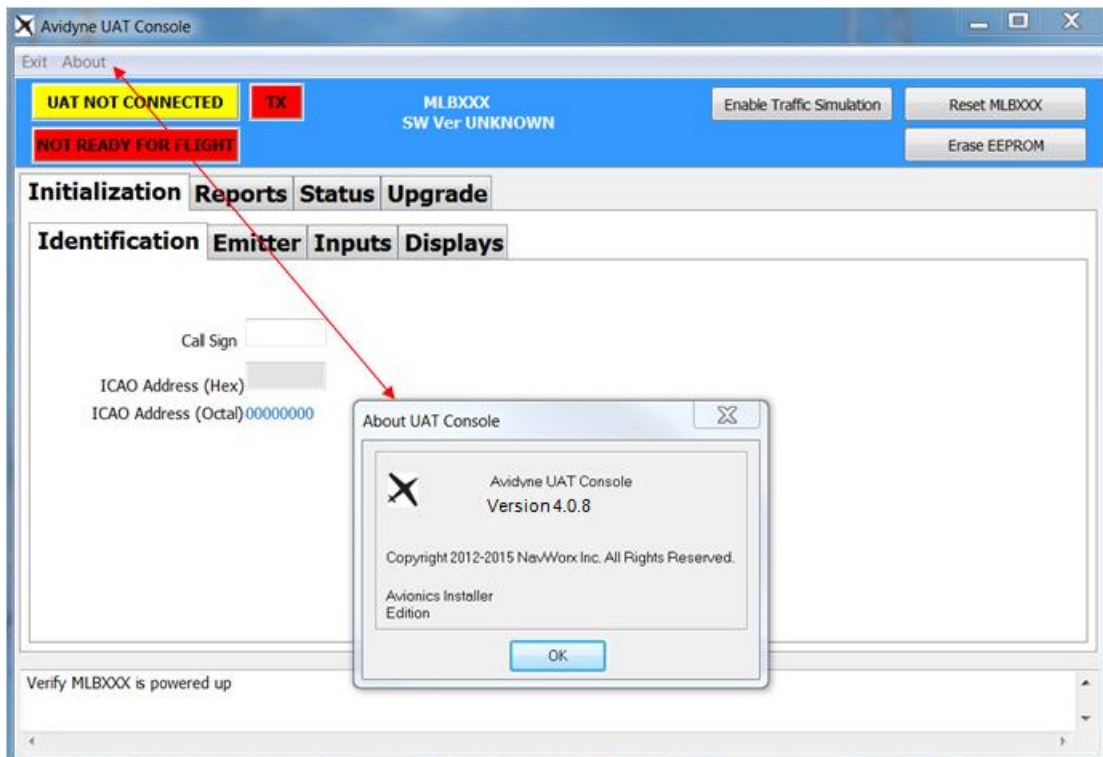
System Configuration:

The Avidyne UAT Console PC based configuration application is located at <http://dealers.avidyne.com/downloads/downloads.asp?prod=mlb100> and is used to verify or change settings and input the aircrafts registration/ICAO address.

To view the version of the Avidyne UAT console open the console and click on the "About" button to show the version number.



Service Information Letter



The MLB100 is shipped with the following configuration, however, if needed, the MLB100 can be configured using the Avidyne UAT console (version 4.0.8 or later), Part Number 580-00044-000.

- GPS: Aviation Format
- Display Port 1: Avidyne, 38400
- ARINC Port: High Speed traffic
- FIS-B per second: 4 messages

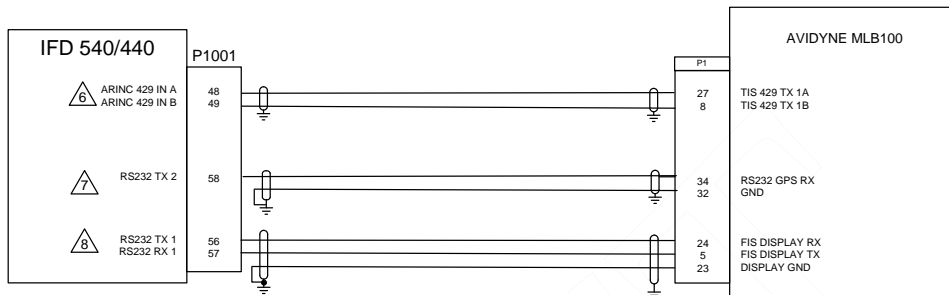
In addition to the above configuration items you will need to enter the aircraft call sign in the "Call Sign" field. After entering the call sign press the tab key on the keyboard to enter the call sign. In most instances the ICAO address will automatically populate. If it doesn't, manually enter the aircraft's ICAO hex code and press the tab key. Refer to the appropriate aircraft registry website for the aircraft ICAO hex code address.

The console requires a Windows PC with one of the following operating system: XP, Windows 7, or Windows 8.



Service Information Letter

IFD440/IFD540 Interconnect:



NOTES:

1. ALL WIRES TO BE 22 AWG OR GREATER UNLESS OTHERWISE NOTED.
2. AT IFD540/440 UNIT, TERMINATE SHIELD GROUNDS TO THE CONNECTOR BACKSHELL OR USE CARD-EDGE CONNECTOR TO TERMINATE SHIELD GROUNDS TO BACK PLATE.
3. WIRE HARNESS OVERBRAID IS NOT SHOWN BUT MAY BE REQUIRED.
4. REFER TO MANUFACTURER'S DOCUMENTATION FOR COMPLETE PINOUT AND INTERCONNECT INFORMATION.
5. IF RS232 OR ARINC429 PORTS ARE UNAVAILABLE, USE ANY OTHER AVAILABLE PORT.
6. CONFIGURE ARINC 429 PORT FOR **Port Speed: High, Traffic Advisory**
7. CONFIGURE GPS RS232 PORT FOR **Aviation**
8. CONFIGURE DISPLAY RS232 PORT FOR **MLB100 Wx**

Contact Information:

For any questions regarding this Service Information Letter please contact Avidyne Technical Support at:

1-888-723-7592 Toll Free US
1-781-402-7592 International Direct Dial

techsupport@avidyne.com
www.avidyne.com/support

Avidyne Corporation
55 Old Bedford Road
Lincoln, MA 01773