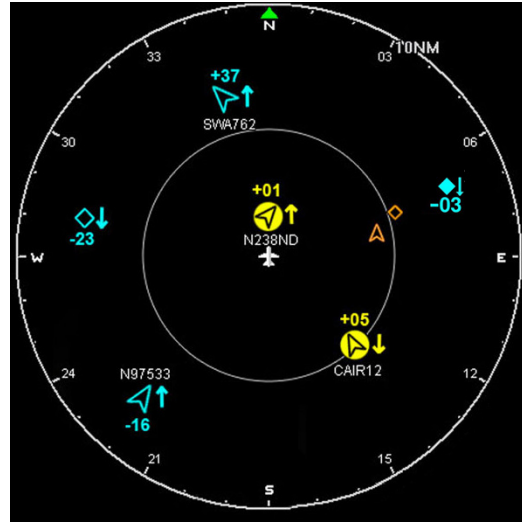


# AVIDYNE® SKYTRAX 600

TRAFFIC ADVISORY SYSTEM



Avidyne's SkyTrax600 Series Traffic Advisory Systems (TAS) combine actively-interrogated targets of the Mode A/C/S transponders of nearby aircraft along with the 1090ES signals from participating ADS-B aircraft, and seamlessly correlates this information on a wide range of display systems, while providing visual and audible alerts in the event of a potential traffic conflict. Providing real-time traffic monitoring and advisories, SkyTrax600 systems are not radar-coverage limited, and provide collision avoidance protection independent of ground-based systems.

SkyTrax600's VeriTAS™ technology seamlessly blends active-surveillance and ADS-B targets to provide greater accuracy and at further ranges for improved safety and situational awareness. Equally important, you continue to benefit from the active-surveillance capability of TAS when flying in airspace where ADS-B is unavailable or where not all aircraft are participating.

# Avidyne Skytrax600 - The Right Fit

## Specifications

### TAS-A

Weight: 6.8lbs (3.08kg)

Height: 7.25" (18.40cm)

Width: 3.10" (7.90cm)

Depth: 9.32" (23.67cm)

### Power Requirements

Power: 11-33vdc

1.5A @ 28vdc

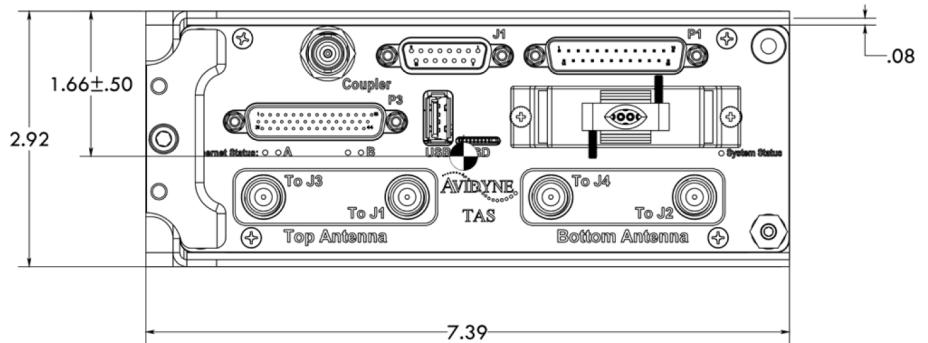
### Environmental

DO160G qualified

- To 50,000 ft.
- -20°C to +55°C Operating
- Short Term -40°C to +70°C

### Cooling

No external cooling required.



I/O	QTY
ARINC429 In	1
RS232	4
Discretes	4
Altitude Encoder In	

### Compliance

DO-178: DAL C

DO-254: DAL C

DO-160: F2, B, A, E, U/G, E, X, X, X, X, X, Z, B, A, B, AC, T, M, B2K2XX, X, X, A, X

TSOs: TSO-C147, TSO-C112c, and TSO-C195b

\* Features and options subject to change without notice.