

SIL Number:	606-00004-008		
To:	Owners, Operators, and Installers of Avidyne EX500/600/5000 MFDs with software Release 4.2 or 8.2 installed.		
Subject:	MFD map may become disabled under some conditions when receiving ADS-B weather with software Release 4.2 or 8.2.		
Purpose:	This Service Information Letter (SIL) advises owners, operators, and installers of Avidyne EX500/600/5000 MFDs with software Release 4.2 or 8.2 of a condition where the MFD Map may become disabled when receiving ADS-B weather.		
Revision:	00	Date:	09/07/2018

Effectivity:

Avidyne EX5000 P/N 700-00004-() with SW Release 8.2
Avidyne EX5000 P/N 700-00030-() with SW Release 8.2
Avidyne EX500 P/N 700-00007-() with SW Release 4.2
Avidyne EX600 P/N 700-00167-() with SW Release 4.2

Issue Description

Avidyne has identified an issue with Avidyne EX500/600/5000 MFDs with software Release 4.2 or 8.2 and receiving ADS-B weather data transmissions that can cause the MFD Map to become disabled when flying in areas of high ADS-B weather data transmissions.

The map becomes disabled only under the following circumstances:

- 1) The MFD has software Release 4.2 or 8.2.
- 2) The MFD is configured to receive ADS-B weather from an ADS-B in device.
- 3) There is a large volume of ADS-B weather data being received.

If ALL of the above conditions are met, the MFD Map application may become disabled, showing a “Yellow Tab” for the following Tabs: Map, Trip, Nrst, DL, Aux, and Engines (if applicable). The Tabs will not be accessible or functional. The following Tabs will still be accessible and functional: Chart, TAWS, and Radar (if applicable). Figure 1 depicts what the MFD tabs will look like if the Map application is disabled. Note not all MFDs have all of the tabs shown in Figure 1 depending on what options are enabled on the MFD.

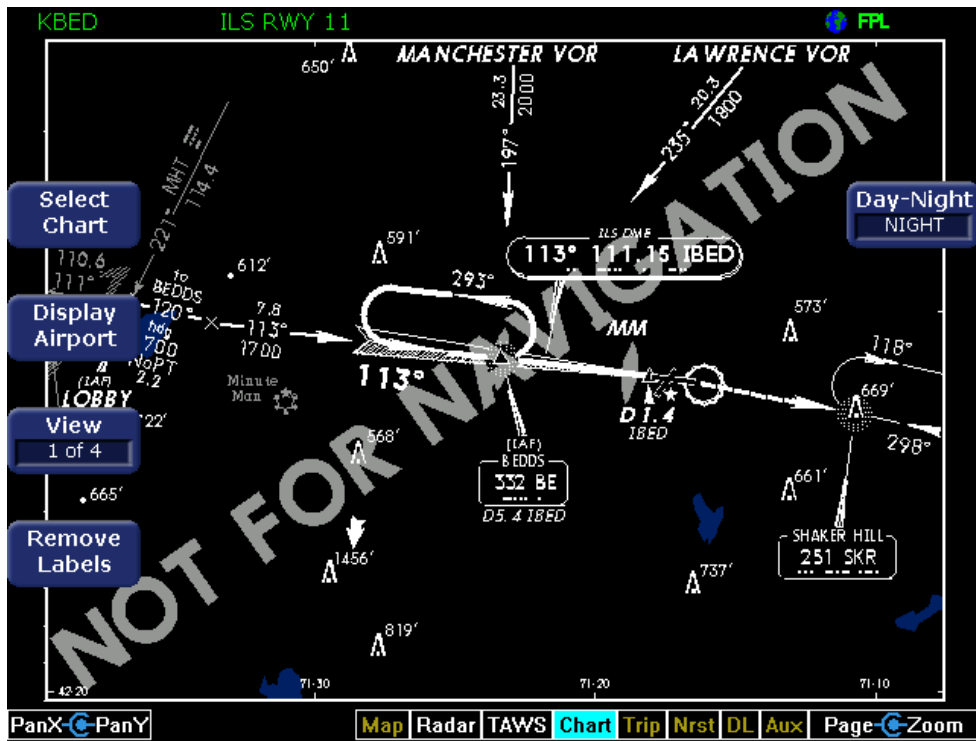


Figure 1: Example of EX600 MFD with Map Application disabled and Yellow Tabs

Recommended Pilot Actions:

In all cases, basic airmanship should be exercised and fundamentals utilized such as Maintain Aircraft Control, Analyze the Situation, and Take Proper Action.

Important Note:

The information displayed on the EX500, EX600 and EX5000 MFD is supplemental data only and has not been certified for use as a primary display for critical or primary data or parameters.

If the Map application becomes disabled (“Yellow Tabs”), power cycle the MFD to restore the Map application. Be aware that even after power cycling the condition may return and another power cycle may be required to restore the Map application.

To prevent the Map application from becoming disabled, perform **any one** of the following actions.

- 1) Disable or turn off the ADS-B in device. (Note this may not be an option on some dual ADS-B in and out devices.)
- 2) Configure the MFD to use datalink weather as opposed to ADS-B weather.

Solution:

Avidyne's software engineering team has identified the source of this issue and will incorporate a change in Software release 4.2.1 and 8.2.1 to address this condition.

Accomplishment Instructions:

Not Applicable.

Warranty Information:

Not Applicable.

Contact Information:

Avidyne Technical Support
1-888-723-7592 toll free
1-781-402-7592 international direct dial
techsupport@avidyne.com
www.avidyne.com/support
Avidyne Corporation
710 North Drive
Melbourne, Fl. 32934